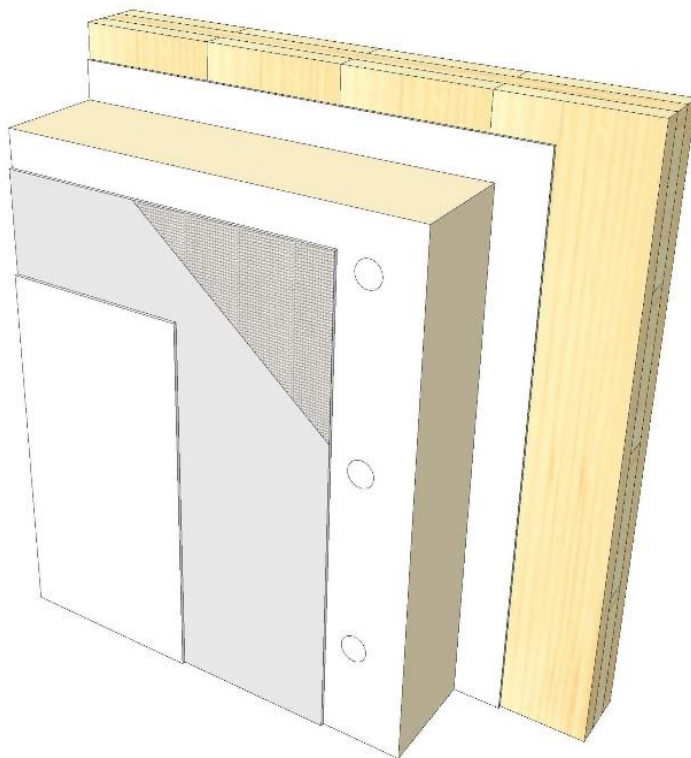
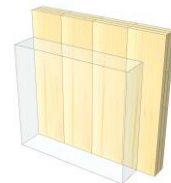


AW 04

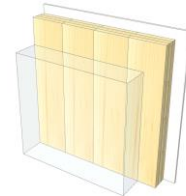
ETICS - EPS



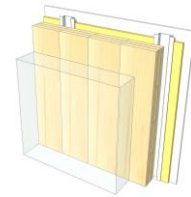
KLH® Visible



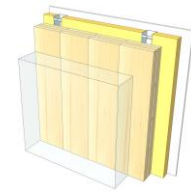
+ G



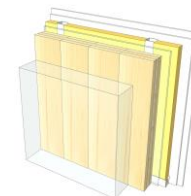
+ RP



+ FF



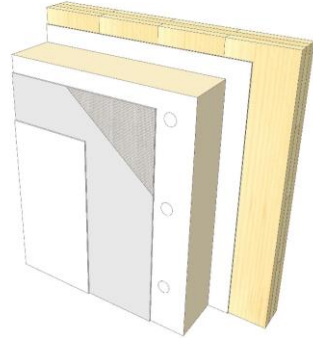
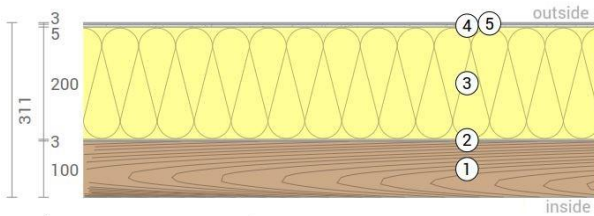
+ FF free / 2*G



	KLH® Visible	+ G	+ RP	+ FF	+ FF free / 2*G
Sound Rw [dB]	36	37	45	47	56
Thermal U [W/m²K]	0,15	0,15	0,14	0,13	0,13
Fire R*EI [min]	30	60	60	90	90
Thickness [mm]	311	324	351	384	396
Ecology [kg CO ₂ eq./m²]	-46	-44	-40	-36	-36

AW 04 V

Exterior wall / ETICS - EPS



No	mm	Material
1	100	KLH® - CLT
2	3	Adhesive
3	200	EPS insulation ($s' \leq 40 \text{ MN/m}^3$)
4	5	Reinforcing mortar with fibernet
5	3	Plaster finish

R*EI (fire attack on one side)
30 minutes

U-Value
0,15 W/(m ² K)

Rw
36 (-3;-6) dB

Thickness
311 mm
Mass per squaremeter
70 kg/m ²

Global warming potential
-46 kg CO ₂ eq./m ²
Primary energy (n. renewable)
188 kWh/m ²

Link Ubakus
[AW 04 V Ubakus](#)

Link pre-dimensioning fire
[KLH REI 30](#)

Fire resistance
R*EI
30

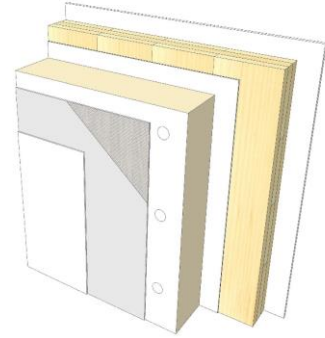
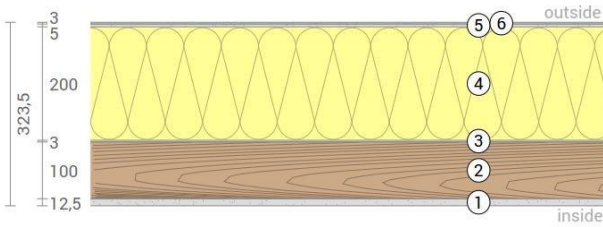
Thermal protection
W/(m²K)
0,15

Sound insulation
dB
36

Ecology
kg CO₂eq./m²
-46

AW 04 G

Exterior wall / ETICS - EPS
Cladded



No	mm	Material
1	12,5	Gt-F board
2	100	KLH® - CLT
3	3	Adhesive
4	200	EPS insulation ($s' \leq 40 \text{ MN/m}^3$)
5	5	Reinforcing mortar with fibernet
6	3	Plaster finish

R*EI (fire attack on one side)	60 minutes
--------------------------------	-------------------

U-Value	0,15 W/(m ² K)
---------	----------------------------------

Rw	37 (-3;-6) dB
----	----------------------

Thickness	324 mm
Mass per squaremeter	80 kg/m ²

Global warming potential	-44 kg CO ₂ eq./m ²
Primary energy (n. renewable)	198 kWh/m ²

Link Ubakus
[AW 04 G Ubakus](#)

Link pre-dimensioning fire
[KLH REI 60](#)

Fire resistance
R*EI
60

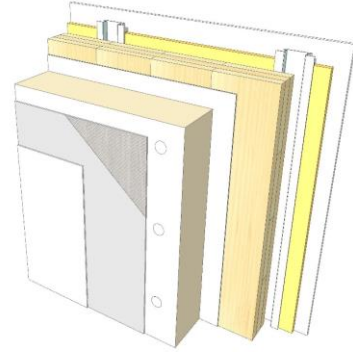
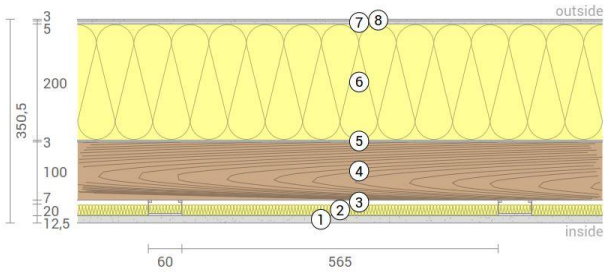
Thermal protection
W/(m²K)
0,15

Sound insulation
dB
37

Ecology
kg CO₂eq./m²
-44

AW 04 RP

Exterior wall / ETICS - EPS
Resilient profiles



No	mm	Material
1	12,5	Gt-F board
2	20	Mineral wool
3	27	Resilient profiles
4	100	KLH® - CLT
5	3	Adhesive
6	200	EPS insulation ($s' \leq 40 \text{ MN/m}^3$)
7	5	Reinforcing mortar with fibernet
8	3	Plaster finish

R*EI (fire attack on one side)
60 minutes

U-Value
0,14 W/(m²K)

Rw
45 (-1;-6) dB

Thickness
351 mm
Mass per squaremeter
82 kg/m²

Global warming potential
-40 kg CO ₂ eq./m²
Primary energy (n. renewable)
210 kWh/m²

Link Ubakus
[AW 04 RP Ubakus](#)

Link pre-dimensioning fire
[KLH REI 60](#)

Fire resistance
R*EI
60

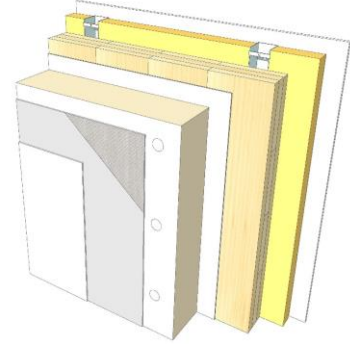
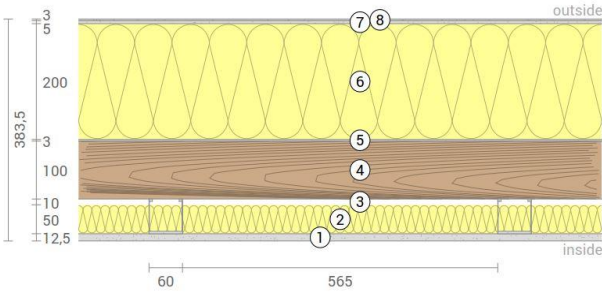
Thermal protection
W/(m²K)
0,14

Sound insulation
dB
45

Ecology
kg CO₂ eq./m²
-40

AW 04 FF

Exterior wall / ETICS - EPS
Facing formwork



No	mm	Material
1	15	Gt-F board
2	50	Rock wool
3	60	CW-profile mounted elastically or free
4	100	KLH® - CLT
5	3	Adhesive
6	200	EPS insulation ($s' \leq 40 \text{ MN/m}^3$)
7	5	Reinforcing mortar with fibernet
8	3	Plaster finish

R*EI (fire attack on one side)
90 minutes

U-Value
0,13 W/(m²K)

Rw
47 (-2;-7) dB

Thickness
384 mm
Mass per squaremeter
84 kg/m²

Global warming potential
-36 kg CO ₂ eq./m²
Primary energy (n. renewable)
222 kWh/m²

Link Ubakus
[AW 04 FF Ubakus](#)

Link pre-dimensioning fire
[KLH REI 90](#)

Fire resistance
R*EI
90

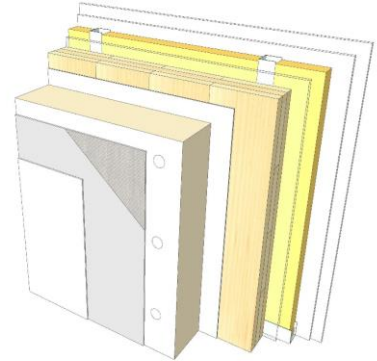
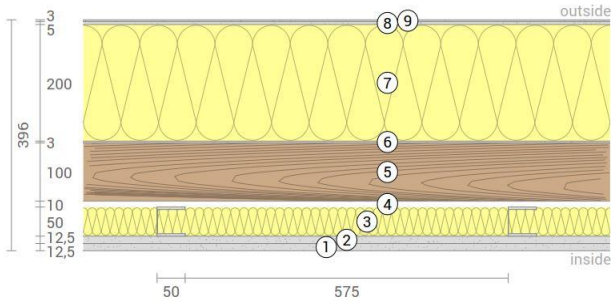
Thermal protection
W/(m²K)
0,13

Sound insulation
dB
47

Ecology
kg CO₂ eq./m²
-36

AW 04 FF2

Exterior wall / ETICS - EPS
Self-supporting formwork



No	mm	Material
1	12,5	Gt-F board
2	12,5	Gt-F board
3	50	CW-profile self-supporting, rock wool
4	10	Air gap
5	100	KLH® - CLT
6	3	Adhesive
7	200	EPS insulation ($\rho' \leq 40 \text{ MN/m}^3$)
8	5	Reinforcing mortar with fibernet
9	3	Plaster finish

R*EI (fire attack on one side)
90 minutes

U-Value
0,13 W/(m ² K)

Rw
56 (-3;-9 dB)

Thickness
396 mm
Mass per squaremeter
92 kg/m ²

Global warming potential
-36 kg CO ₂ eq./m ²
Primary energy (n. renewable)
226 kWh/m ²

Link Ubakus
[AW 04 FF2 Ubakus](#)

Link pre-dimensioning fire
[KLH REI 90](#)

Fire resistance
R*EI
90

Thermal protection
W/(m²K)
0,13

Sound insulation
dB
56

Ecology
kg CO₂eq./m²
-36