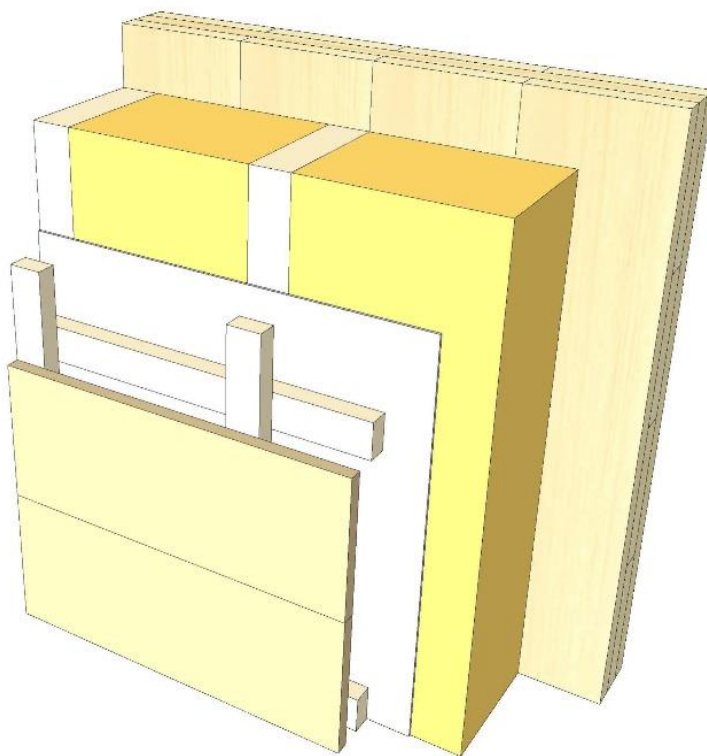
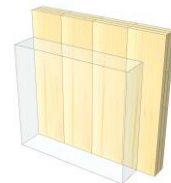


# AW 01

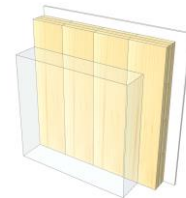
## Ventilated timber facade



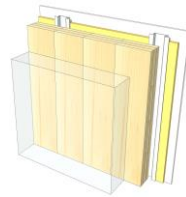
KLH® Visible



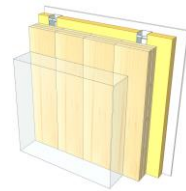
+ G



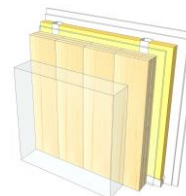
+ RP



+ FF



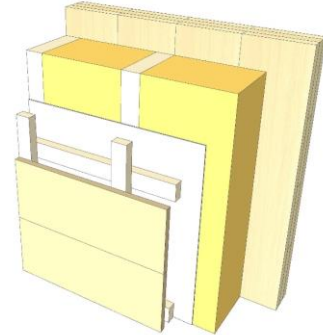
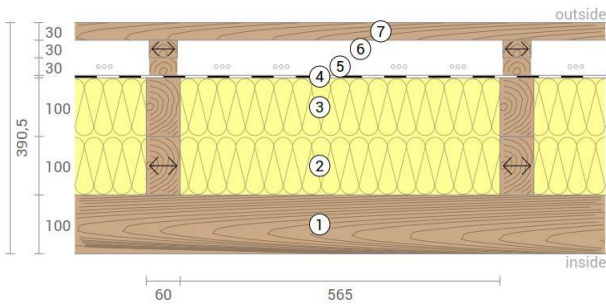
+ FF free / 2\*G



	KLH® Visible	+ G	+ RP	+ FF	+ FF free / 2*G
<b>Sound</b> Rw [dB]	44	45	52	55	63
<b>Thermal</b> U [W/m²K]	0,17	0,17	0,16	0,14	0,14
<b>Fire</b> R*EI [min]	30	60	60	90	90
<b>Thickness</b> [mm]	391	403	430	463	476
<b>Ecology</b> [kg CO <sub>2</sub> eq./m²]	-97	-94	-92	-88	-88

# AW 01 V

## Exterior wall / ventilated timber facade



No	mm	Material
1	100	KLH® - CLT
2	100	Timber batten, rock wool
3	100	Timber batten, rock wool
4	0,5	Wind barrier
5	30	Timber batten (spruce) vertical
6	30	Timber batten (spruce) horizontal
7	30	Closed spruce formwork

R*EI (fire attack on one side)	<b>30</b> minutes
--------------------------------	-------------------

U-Value	<b>0,17</b> W/(m²K)
---------	---------------------

Rw	<b>44</b> (0;-4) dB
----	---------------------

Thickness	<b>391</b> mm
Mass per squaremeter	<b>75</b> kg/m²

Global warming potential	<b>-97</b> kg CO <sub>2</sub> eq./m²
Primary energy (n. renewable)	<b>75</b> kWh/m²

Link Ubakus  
[AW 01 V Ubakus](#)

Link pre-dimensioning fire  
[KLH REI 30](#)

Fire resistance  
R\*EI  
**30**

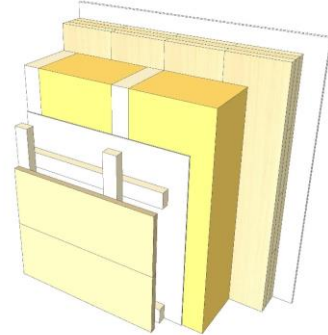
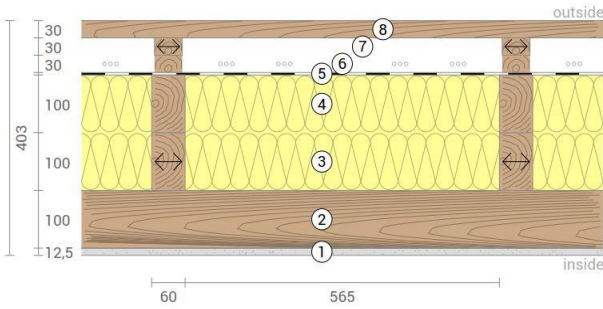
Thermal protection  
W/(m²K)  
**0,17**

Sound insulation  
dB  
**44**

Ecology  
kg CO<sub>2</sub> eq./m²  
**-97**

# AW 01 G

## Exterior wall / ventilated timber facade Cladded



No	mm	Material
1	12,5	Gt-F board
2	100	KLH® - CLT
3	100	Timber batten, rock wool
4	100	Timber batten, rock wool
5	0,5	Wind barrier
6	30	Timber batten (spruce) vertical
7	30	Timber batten (spruce) horizontal
8	30	Closed spruce formwork

R*EI (fire attack on one side)
<b>60</b> minutes

U-Value
<b>0,17</b> W/(m²K)

Rw
<b>45</b> (0;-4) dB

Thickness
<b>403</b> mm
Mass per squaremeter
<b>85</b> kg/m²

Global warming potential
<b>-94</b> kg CO <sub>2</sub> eq./m²
Primary energy (n. renewable)
<b>86</b> kWh/m²

Link Ubakus  
[AW 01 G Ubakus](#)

Link pre-dimensioning fire  
[KLH REI 60](#)

Fire resistance  
R\*EI  
**60**

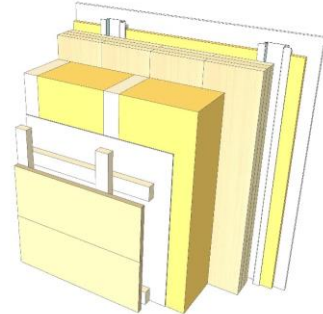
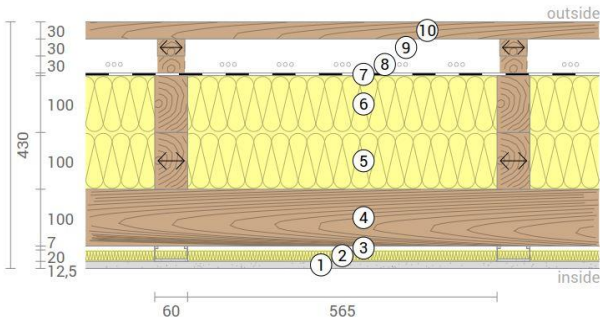
Thermal protection  
W/(m²K)  
**0,17**

Sound insulation  
dB  
**45**

Ecology  
kg CO<sub>2</sub>eq./m²  
**-94**

# AW 01 RP

Exterior wall / ventilated timber facade  
Resilient profiles



No	mm	Material
1	12,5	Gt-F board
2	20	Mineral wool
3	27	Resilient profiles
4	100	KLH® - CLT
5	100	Timber batten, rock wool
6	100	Timber batten, rock wool
7	0,5	Wind barrier
8	30	Timber batten (spruce) vertical
9	30	Timber batten (spruce) horizontal
10	30	Closed spruce formwork

R*EI (fire attack on one side)
<b>60</b> minutes

U-Value
<b>0,16</b> W/(m²K)

Rw
<b>52</b> (-4;10) dB

Thickness
<b>430</b> mm
Mass per squaremeter
<b>87</b> kg/m²

Global warming potential
<b>-92</b> kg CO <sub>2</sub> eq./m²
Primary energy (n. renewable)
<b>100</b> kWh/m²

Link Ubakus  
[AW 01 RP Ubakus](#)

Link pre-dimensioning fire  
[KLH REI 60](#)

Fire resistance  
R\*EI  
**60**

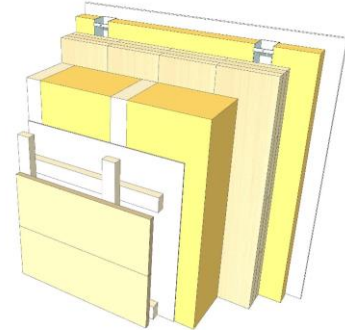
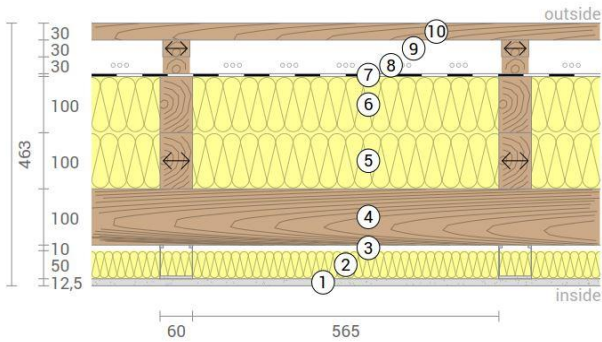
Thermal protection  
W/(m²K)  
**0,16**

Sound insulation  
dB  
**52**

Ecology  
kg CO<sub>2</sub> eq./m²  
**-92**

# AW 01 FF

Exterior wall / ventilated timber facade  
Facing formwork



No	mm	Material
1	15	Gt-F board
2	50	Rock wool
3	60	CW-profile mounted elastically or free
4	100	KLH® - CLT
5	100	Timber batten, rock wool
6	100	Timber batten, rock wool
7	0,5	Wind barrier
8	30	Timber batten (spruce) vertical
9	30	Timber batten (spruce) horizontal
10	30	Closed spruce formwork

R*EI (fire attack on one side)
<b>90</b> minutes

U-Value
<b>0,14</b> W/(m²K)

Rw
<b>55</b> (-4;11) dB

Thickness
<b>463</b> mm
Mass per squaremeter
<b>90</b> kg/m²

Global warming potential
<b>-88</b> kg CO <sub>2</sub> eq./m²
Primary energy (n. renewable)
<b>113</b> kWh/m²

Link Ubakus  
[AW 01 FF Ubakus](#)

Link pre-dimensioning fire  
[KLH REI 90](#)

Fire resistance  
R\*EI  
**90**

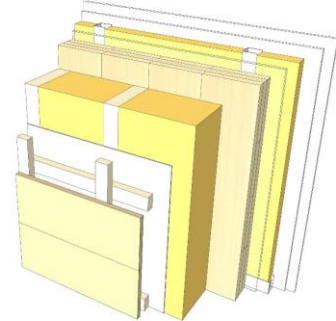
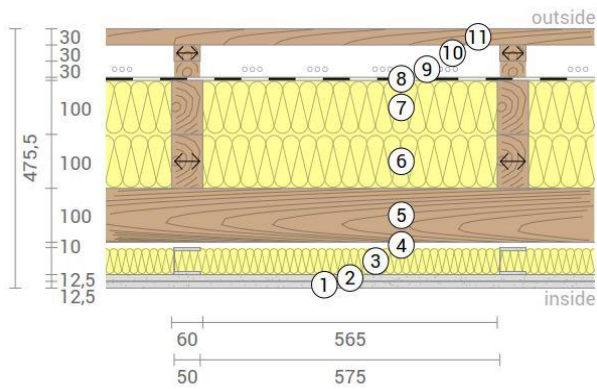
Thermal protection  
W/(m²K)  
**0,14**

Sound insulation  
dB  
**55**

Ecology  
kg CO<sub>2</sub> eq./m²  
**-88**

# AW 01 FF2

Exterior wall / ventilated timber facade  
Self-supporting formwork



No	mm	Material
1	12,5	Gt-F board
2	12,5	Gt-F board
3	50	CW-profile self-supporting, rock wool
4	10	Air gap
5	100	KLH® - CLT
6	100	Timber batten, rock wool
7	100	Timber batten, rock wool
8	0,5	Wind barrier
9	30	Timber batten (spruce) vertical
10	30	Timber batten (spruce) horizontal
11	30	Closed spruce formwork

R\*EI (fire attack on one side)  
**90** minutes

U-Value  
**0,14** W/(m²K)

Rw  
**63** (-4;-10) dB

Thickness  
**476** mm

Mass per squaremeter  
**98** kg/m²

Global warming potential  
**-88** kg CO<sub>2</sub> eq./m²

Primary energy (n. renewable)  
**117** kWh/m²

Link Ubakus  
[AW 01 FF2 Ubakus](#)

Link pre-dimensioning fire  
[KLH REI 90](#)

Fire resistance  
R\*EI  
**90**

Thermal protection  
W/(m²K)  
**0,14**

Sound insulation  
dB  
**63**

Ecology  
kg CO<sub>2</sub>eq./m²  
**-88**