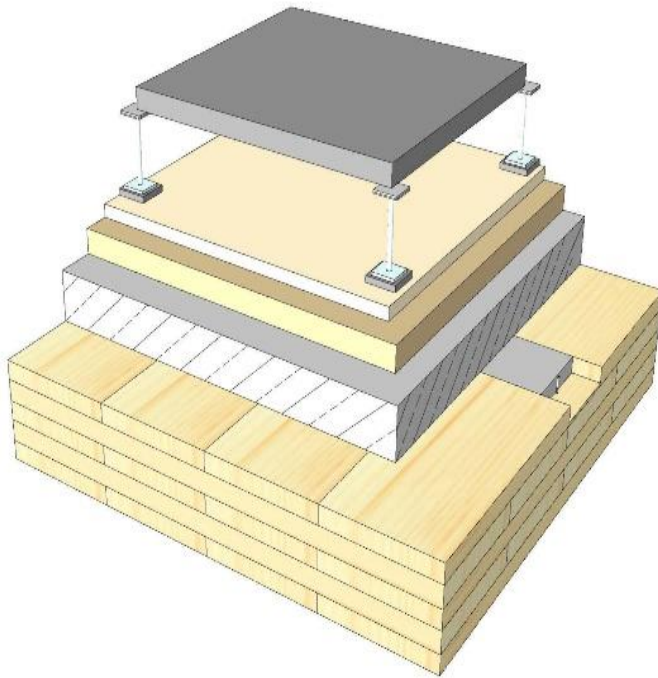
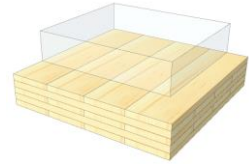


# GD 08

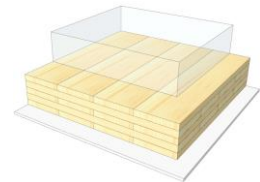
## Double floor / TCC



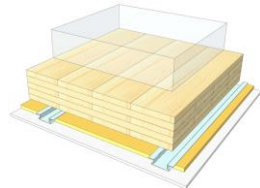
KLH® Visible



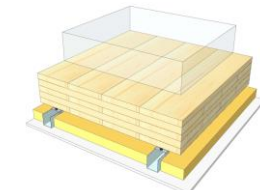
+ G



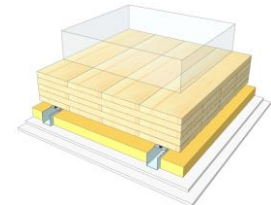
+ FS



+ SC



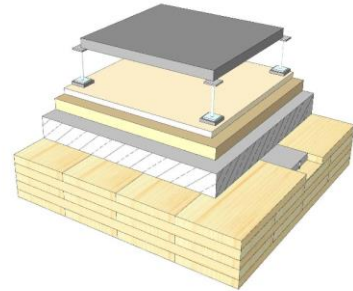
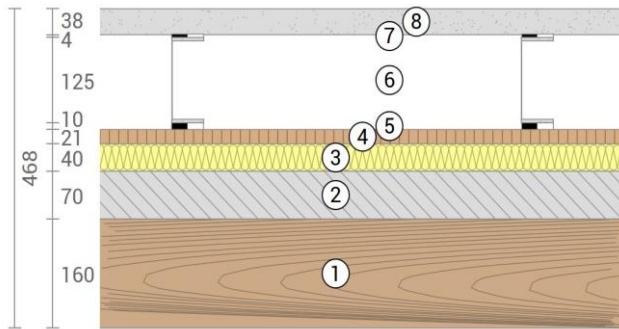
+ SC / 2\*G



	KLH® Visible	+ G	+ RP	+ SC	+ SC / 2*G
<b>Airborne</b> Rw [dB]	61	61	63	64	78
<b>Impact</b> Ln,w [dB]	47	47	42	39	37
<b>Thermal</b> U [W/m²K]	0,32	0,31	0,27	0,24	0,24
<b>Fire</b> R*EI [min]	90	120	120	120	120
<b>Thickness</b> [mm]	468	481	508	541	553
<b>Ecology</b> [kg CO2 eq./m²]	-91	-90	-85	-82	-80

# GD 08 V

Compartment floor / raised floor system on TCC



No	mm	Material
1	160	KLH® - CLT
2	70	Concrete top layer
3	40	Wood fiberboard
4	21	OSB panel
5	10	Impact noise bearing, PU
6	125	Leg supports
7	4	Bearing plates
8	38	Floor elements, mineralic

R*EI (fire attack from below)
<b>90</b> minutes

U-Value
<b>0,32</b> W/(m²K)

Rw
<b>61</b> (-2;-8) dB

Lnw
<b>47</b> (0) dB

Thickness
<b>468</b> mm

Mass per squaremeter
<b>311</b> kg/m²

Global warming potential
<b>-91</b> kg CO <sub>2</sub> eq./m²

Primary energy (n. renewable)
<b>241</b> kWh/m²

Link Ubakus  
[GD 08 V Ubakus](#)

Link pre-dimensioning fire  
[KLH REI 90](#)

Fire resistance  
R\*EI  
**90**

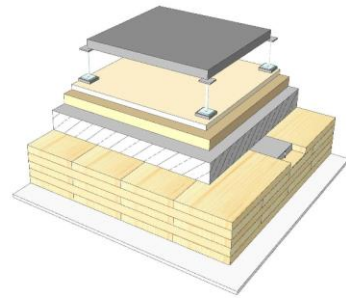
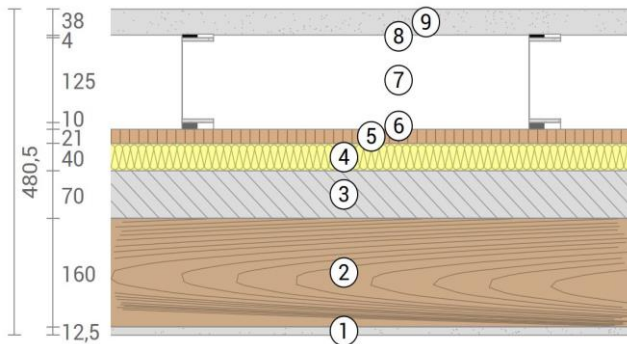
Thermal protection  
W/(m²K)  
**0,32**

Sound insulation  
dB  
**61**

Ecology  
kg CO<sub>2</sub>eq./m²  
**-91**

# GD 08 G

Compartment floor / raised floor system on TCC  
cladded



No	mm	Material
1	12,5	Gt-F board
2	160	KLH® - CLT
3	70	Concrete top layer
4	40	Wood fiberboard
5	21	OSB panel
6	10	Impact noise bearing, PU
7	125	Leg supports
8	4	Bearing plates
9	38	Floor elements, mineralic

R*EI (fire attack from below)
<b>120</b> minutes

U-Value
<b>0,31</b> W/(m²K)

Rw
<b>61</b> (-2;-8) dB

Lnw
<b>47</b> (0) dB

Thickness
<b>481</b> mm

Mass per squaremeter
<b>320</b> kg/m²

Global warming potential
<b>-90</b> kg CO <sub>2</sub> eq./m²

Primary energy (n. renewable)
<b>246</b> kWh/m²

Link Ubakus  
[GD 08 G Ubakus](#)

Link pre-dimensioning fire  
[KLH REI 120](#)

Fire resistance  
R\*EI  
**120**

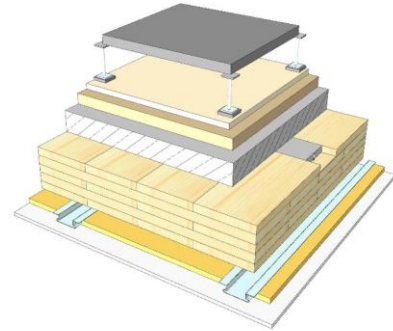
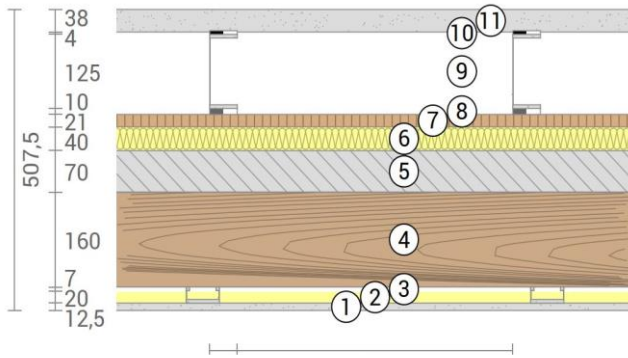
Thermal protection  
W/(m²K)  
**0,31**

Sound insulation  
dB  
**61**

Ecology  
kg CO<sub>2</sub>eq./m²  
**-90**

# GD 08 RP

Compartment floor / raised floor system on TCC  
 SC on resilient profiles



No	mm	Material
1	12,5	Gt-F board
2	20	Mineral wool
3	27	Resilient profile
4	160	KLH® - CLT
5	70	Concrete top layer
6	40	Wood fiberboard
7	21	OSB panel
8	10	Impact noise bearing, PU
9	125	Leg supports
10	4	Bearing plates
11	38	Floor elements, mineralic

R*EI (fire attack from below)
<b>120</b> minutes

U-Value
<b>0,27</b> W/(m²K)

Rw
<b>63</b> (-3;-9) dB

Lnw
<b>42</b> (2) dB

Thickness
<b>508</b> mm
Mass per squaremeter
<b>322</b> kg/m²

Global warming potential
<b>-85</b> kg CO <sub>2</sub> eq./m²
Primary energy (n. renewable)
<b>263</b> kWh/m²

Link Ubakus  
[GD 08 RP Ubakus](#)

Link pre-dimensioning fire  
[KLH REI 120](#)

Fire resistance  
 R\*EI  
**120**

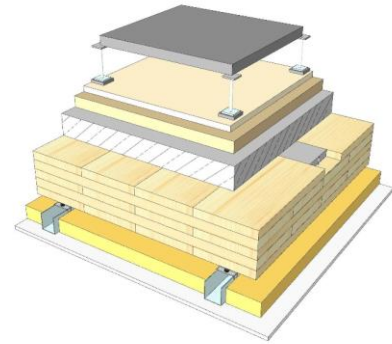
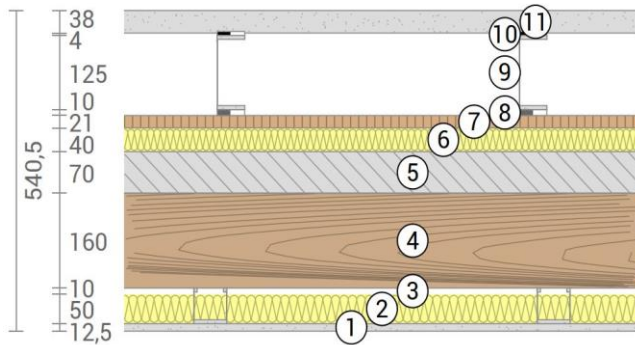
Thermal protection  
 W/(m²K)  
**0,27**

Sound insulation  
 dB  
**63**

Ecology  
 kg CO<sub>2</sub>eq./m²  
**-85**

# GD 08 SC

Compartment floor / raised floor system on TCC  
 SC on CD-profiles



No	mm	Material
1	12,5	Gt-F board
2	50	Mineral wool
3	60	CD-profile
4	160	KLH® - CLT
5	70	Concrete top layer
6	40	Wood fiberboard
7	21	OSB panel
8	10	Impact noise bearing, PU
9	125	Leg supports
10	4	Bearing plates
11	38	Floor elements, mineralic

R*EI (fire attack from below)	<b>120</b> minutes
-------------------------------	--------------------

U-Value	<b>0,24</b> W/(m²K)
---------	---------------------

Rw	<b>64</b> (-1;-7) dB
----	----------------------

Lnw	<b>39</b> (2) dB
-----	------------------

Thickness	<b>541</b> mm
-----------	---------------

Mass per squaremeter	<b>323</b> kg/m²
----------------------	------------------

Global warming potential	<b>-82</b> kg CO <sub>2</sub> eq./m²
--------------------------	--------------------------------------

Primary energy (n. renewable)	<b>272</b> kWh/m²
-------------------------------	-------------------

Link Ubakus  
[GD 08 SC Ubakus](#)

Link pre-dimensioning fire  
[KLH REI 120](#)

Fire resistance  
 R\*EI  
**120**

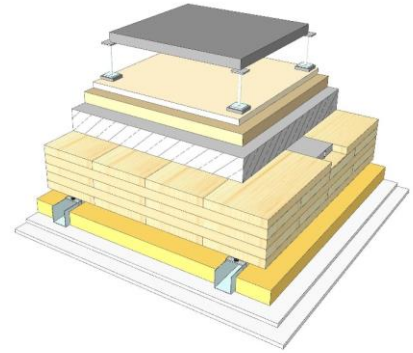
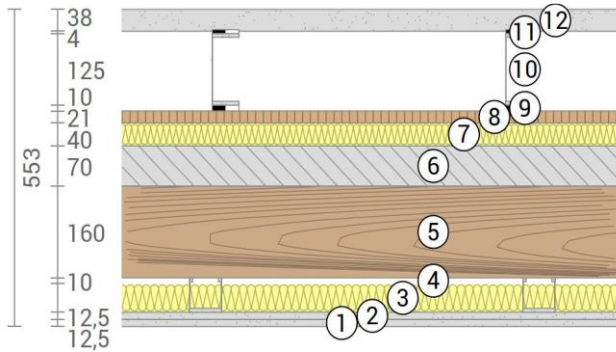
Thermal protection  
 W/(m²K)  
**0,24**

Sound insulation  
 dB  
**64**

Ecology  
 kg CO<sub>2</sub>eq./m²  
**-82**

# GD 08 SC2

Compartment floor / raised floor system on TCC  
 SC on CD-profiles, resilient clips



No	mm	Material
1	12,5	Gt-F board
2	12,5	Gt-F board
3	50	Mineral wool
4	60	CD-profile on resilient clips
5	160	KLH® - CLT
6	70	Concrete top layer
7	40	Wood fiberboard
8	21	OSB panel
9	10	Impact noise bearing, PU
10	125	Leg supports
11	4	Bearing plates
12	38	Floor elements, mineralic

R*EI (fire attack from below)	<b>120</b> minutes
-------------------------------	--------------------

U-Value	<b>0,24</b> W/(m²K)
---------	---------------------

Rw	<b>78</b> (-7;-15) dB
----	-----------------------

Lnw	<b>37</b> (2) dB
-----	------------------

Thickness	<b>553</b> mm
-----------	---------------

Mass per squaremeter	<b>333</b> kg/m²
----------------------	------------------

Global warming potential	<b>-80</b> kg CO <sub>2</sub> eq./m²
--------------------------	--------------------------------------

Primary energy (n. renewable)	<b>283</b> kWh/m²
-------------------------------	-------------------

Link Ubakus  
[GD 08 SC2 Ubakus](#)

Link pre-dimensioning fire  
[KLH REI 120](#)

Fire resistance  
 R\*EI  
**120**

Thermal protection  
 W/(m²K)  
**0,24**

Sound insulation  
 dB  
**78**

Ecology  
 kg CO<sub>2</sub>eq./m²  
**-80**