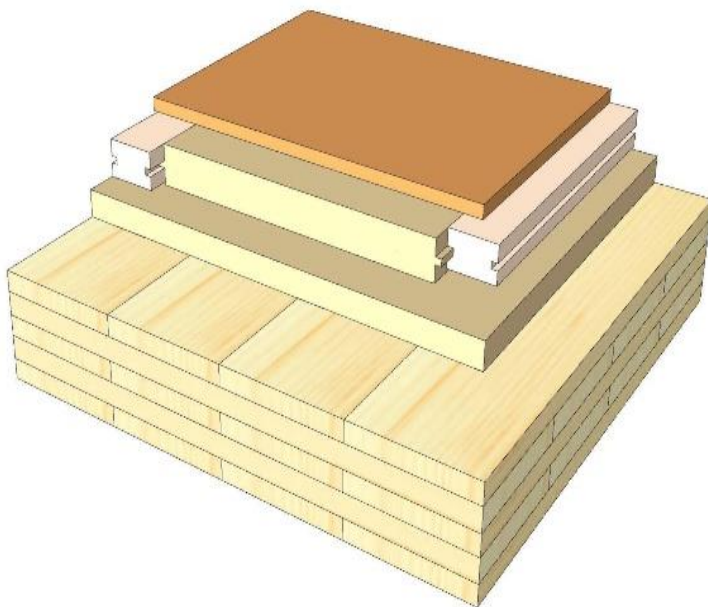
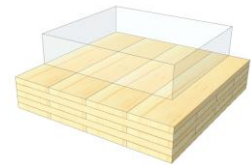


GD 07

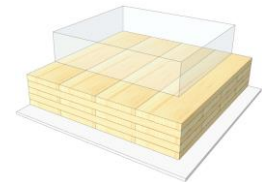
Wood planks / wood fiber system



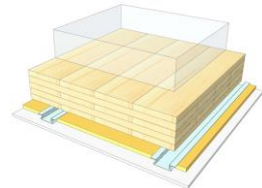
KLH® Visible



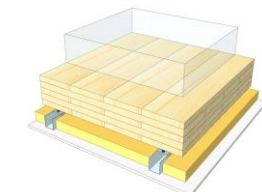
+ G



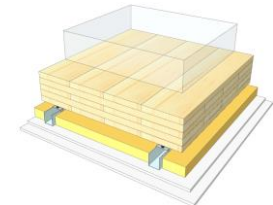
+ FS



+ SC



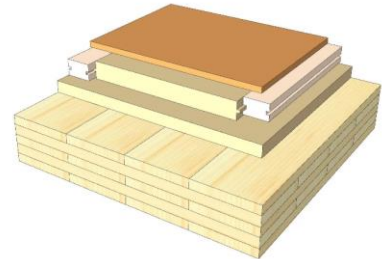
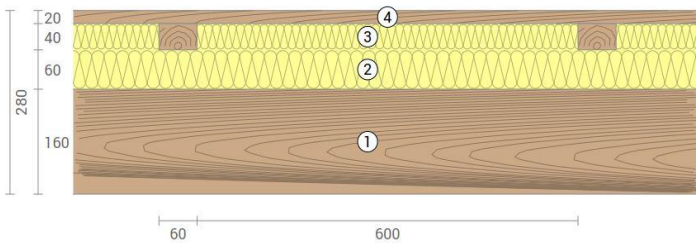
+ SC / 2*G



	KLH® Visible	+ G	+ RP	+ SC	+ SC / 2*G
Airborne Rw [dB]	53	54	56	58	70
Impact Ln,w [dB]	64	64	60	54	48
Thermal U [W/m²K]	0,25	0,25	0,22	0,20	0,20
Fire R*EI [min]	90	120	120	120	120
Thickness [mm]	280	293	320	353	365
Ecology [kg CO2 eq./m²]	-140	-137	-134	-131	-129

GD 07 V

Compartment floor / wood planks, decoupled insulation system



No	mm	Material
1	160	KLH® - CLT
2	60	Wood fiberboard
3	40	Wood fiberboard
4	35	Sub-construction timber
5	20	Wood planks

R*EI (fire attack from below)
90 minutes

U-Value
0,25 W/(m²K)

Rw
53 (-2;-6) dB

Lnw
64 (0) dB

Thickness
280 mm

Mass per squaremeter
99 kg/m²

Global warming potential
-140 kg CO ₂ eq./m²

Primary energy (n. renewable)
103 kWh/m²

Link Ubakus
[GD 07 V Ubakus](#)

Link pre-dimensioning fire
[KLH REI 90](#)

Fire resistance
R*EI
90

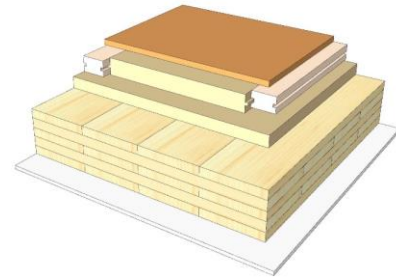
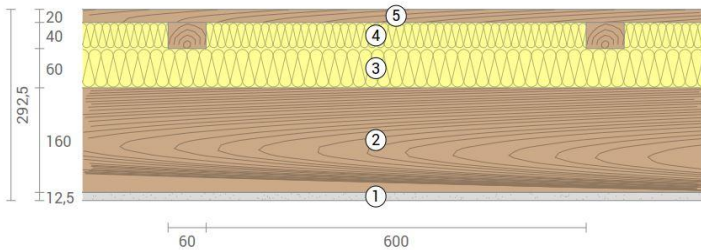
Thermal protection
W/(m²K)
0,25

Sound insulation
dB
53

Ecology
kg CO₂eq./m²
-140

GD 07 G

Compartment floor / wood planks, decoupled insulation system cladded



No	mm	Material
1	12,5	Gt-F board
2	160	KLH® - CLT
3	60	Wood fiberboard
4	40	Wood fiberboard
5	35	Sub-construction timber
6	20	Wood planks

R*EI (fire attack from below)	120 minutes
-------------------------------	--------------------

U-Value	0,25 W/(m²K)
---------	---------------------

Rw	54 (-2;-6) dB
----	----------------------

Lnw	64 (0) dB
-----	------------------

Thickness	293 mm
-----------	---------------

Mass per squaremeter	109 kg/m²
----------------------	------------------

Global warming potential	-137 kg CO ₂ eq./m²
--------------------------	---------------------------------------

Primary energy (n. renewable)	114 kWh/m²
-------------------------------	-------------------

Link Ubakus
[GD 07 G Ubakus](#)

Link pre-dimensioning fire
[KLH REI 120](#)

Fire resistance
R*EI
120

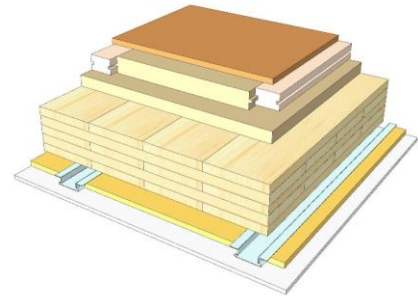
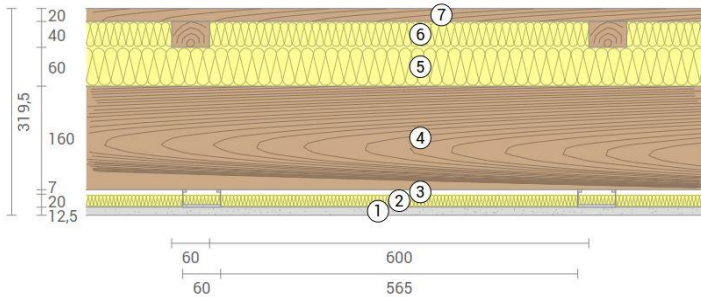
Thermal protection
W/(m²K)
0,25

Sound insulation
dB
54

Ecology
kg CO₂eq./m²
-137

GD 07 RP

Compartment floor / wood planks, decoupled insulation system
SC on resilient profiles



No	mm	Material
1	12,5	Gt-F board
2	20	Mineral wool
3	27	Resilient profile
4	160	KLH® - CLT
5	60	Wood fiberboard
6	40	Wood fiberboard
7	35	Sub-construction timber
8	20	Wood planks

R*EI (fire attack from below)	120 minutes
-------------------------------	--------------------

U-Value	0,22 W/(m²K)
---------	---------------------

Rw	56 (-2;-7) dB
----	----------------------

Lnw	60 (1) dB
-----	------------------

Thickness	320 mm
-----------	---------------

Mass per squaremeter	111 kg/m²
----------------------	------------------

Global warming potential	-134 kg CO ₂ eq./m²
--------------------------	---------------------------------------

Primary energy (n. renewable)	127 kWh/m²
-------------------------------	-------------------

Link Ubakus
[GD 07 RP Ubakus](#)

Link pre-dimensioning fire
[KLH REI 120](#)

Fire resistance
R*EI
120

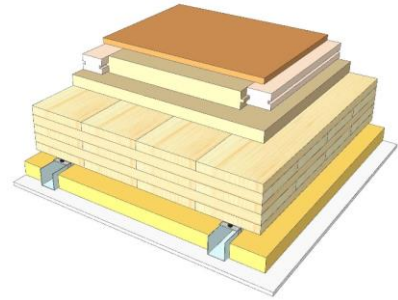
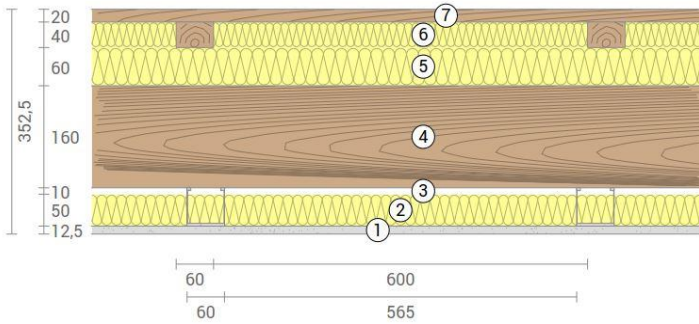
Thermal protection
W/(m²K)
0,22

Sound insulation
dB
56

Ecology
kg CO₂eq./m²
-134

GD 07 SC

Compartment floor / wood planks, decoupled insulation system
SC on CD-profiles



No	mm	Material
1	12,5	Gt-F board
2	50	Mineral wool
3	60	CD-profile
4	160	KLH® - CLT
5	60	Wood fiberboard
6	40	Wood fiberboard
7	35	Sub-construction timber
8	20	Wood planks

R*EI (fire attack from below)	120 minutes
-------------------------------	--------------------

U-Value	0,2 W/(m²K)
---------	--------------------

Rw	58 (-1;-6) dB
----	----------------------

Lnw	54 (1) dB
-----	------------------

Thickness	353 mm
-----------	---------------

Mass per squaremeter	112 kg/m²
----------------------	------------------

Global warming potential	-131 kg CO ₂ eq./m²
--------------------------	---------------------------------------

Primary energy (n. renewable)	136 kWh/m²
-------------------------------	-------------------

Link Ubakus
[GD 07 SC Ubakus](#)

Link pre-dimensioning fire
[KLH REI 120](#)

Fire resistance
R*EI
120

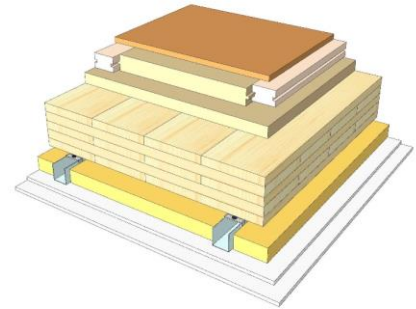
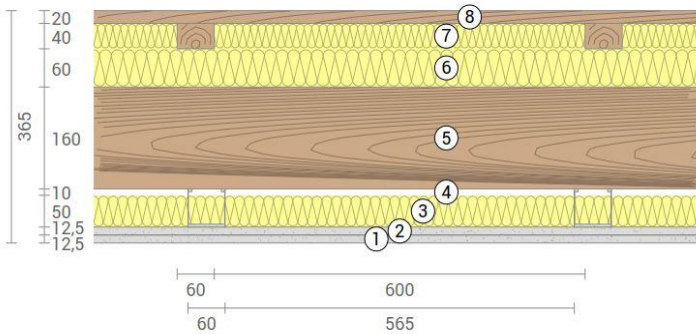
Thermal protection
W/(m²K)
0,2

Sound insulation
dB
58

Ecology
kg CO₂eq./m²
-131

GD 07 SC2

Compartment floor / wood planks, decoupled insulation system
SC on CD-profiles, resilient clips



No	mm	Material
1	12,5	Gt-F board
2	12,5	Gt-F board
3	50	Mineral wool
4	60	CD-profile on resilient clips
5	160	KLH® - CLT
6	60	Wood fiberboard
7	40	Wood fiberboard
8	35	Sub-construction timber
9	20	Wood planks

R*EI (fire attack from below)
120 minutes

U-Value
0,2 W/(m²K)

Rw
70 (-4;12) dB

Lnw
48 (5) dB

Thickness
365 mm

Mass per squaremeter
122 kg/m²

Global warming potential
-129 kg CO ₂ eq./m²

Primary energy (n. renewable)
147 kWh/m²

Link Ubakus
[GD 07 SC2 Ubakus](#)

Link pre-dimensioning fire
[KLH REI 120](#)

Fire resistance
R*EI
120

Thermal protection
W/(m²K)
0,2

Sound insulation
dB
70

Ecology
kg CO₂eq./m²
-129