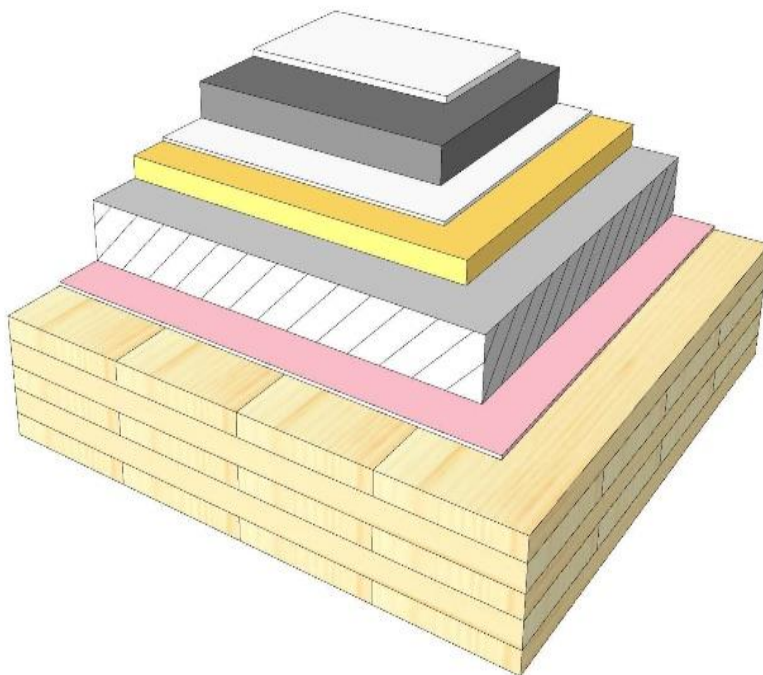
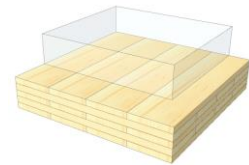


GD 03

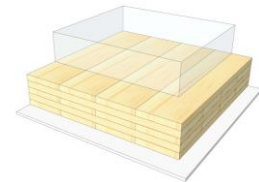
Wet screed / bonded heavy fill (elastic or acoustic layer)



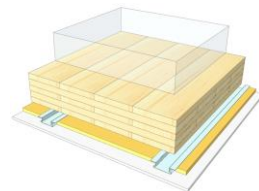
KLH® Visible



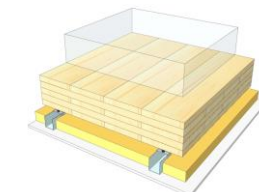
+ G



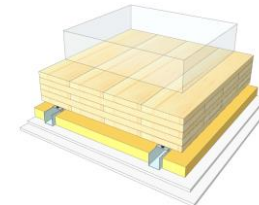
+ FS



+ SC



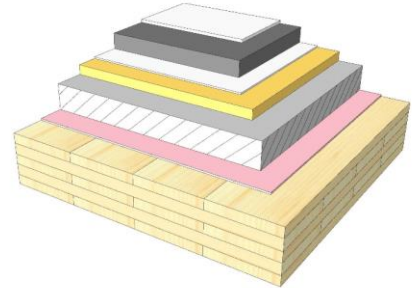
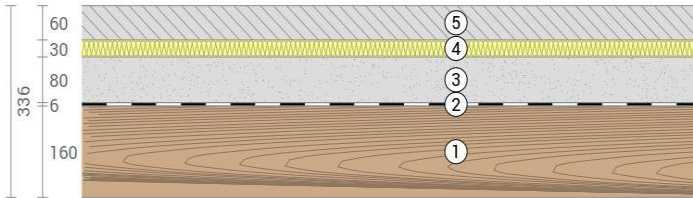
+ SC / 2*G



	KLH® Visible	+ G	+ RP	+ SC	+ SC / 2*G
Airborne Rw [dB]	59	60	62	68	74
Impact Ln,w [dB]	46	46	41	39	37
Thermal U [W/m²K]	0,40	0,39	0,32	0,28	0,28
Fire R*EI [min]	90	120	120	120	120
Thickness [mm]	336	349	376	409	421
Ecology [kg CO2 eq./m²]	-83	-81	-78	-75	-73

GD 03 V

Compartment floor / Cement screed, heavy fill
(elast. bonded or acoustic sheet)



No	mm	Material
1	160	KLH® - CLT
2	6	Acoustic sheed (or elast. bonded fill)
3	80	Heavy fill (bonded)
4	30	Impact sound insulation, $s' \leq 10 \text{ MN/m}^3$
5	60	Wet screed

R*EI (fire attack from below)	90 minutes
-------------------------------	-------------------

U-Value	0,4 W/(m²K)
---------	--------------------

Rw	59 (-1;-4) dB
----	----------------------

Lnw	46 (-2) dB
-----	-------------------

Thickness	336 mm
-----------	---------------

Mass per squaremeter	334 kg/m²
----------------------	------------------

Global warming potential	-83 kg CO ₂ eq./m²
--------------------------	--------------------------------------

Primary energy (n. renewable)	101 kWh/m²
-------------------------------	-------------------

Link Ubakus
[GD 03 V Ubakus](#)

Link pre-dimensioning fire
[KLH REI 90](#)

Fire resistance
R*EI
90

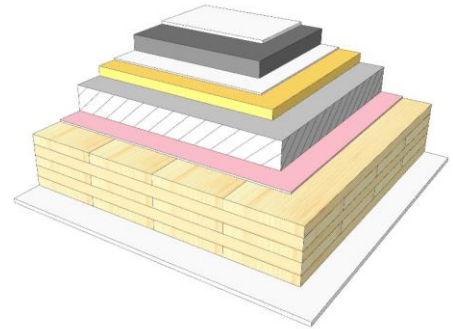
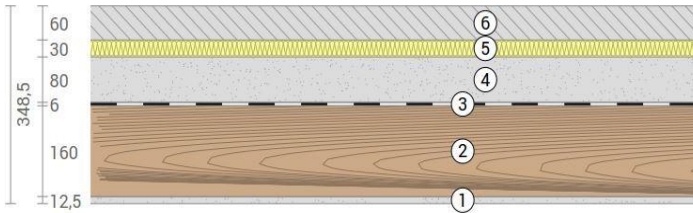
Thermal protection
W/(m²K)
0,4

Sound insulation
dB
59

Ecology
kg CO₂eq./m²
-83

GD 03 G

Compartment floor / Cement screed, heavy fill
(elast. bonded or acoustic sheet) / cladded



No	mm	Material
1	12,5	Gt-F board
2	160	KLH® - CLT
3	6	Acoustic sheed (or elast. bonded fill)
4	80	Heavy fill (bonded)
5	30	Impact sound insulation, $s' \leq 10 \text{ MN/m}^3$
6	60	Wet screed

R*EI (fire attack from below)	120 minutes
-------------------------------	--------------------

U-Value	0,39 W/(m ² K)
---------	----------------------------------

Rw	60 (-1;-4) dB
----	----------------------

Lnw	46 (-2) dB
-----	-------------------

Thickness	349 mm
-----------	---------------

Mass per squaremeter	344 kg/m ²
----------------------	------------------------------

Global warming potential	-81 kg CO ₂ eq./m ²
--------------------------	--

Primary energy (n. renewable)	111 kWh/m ²
-------------------------------	-------------------------------

Link Ubakus
[GD 03 G Ubakus](#)

Link pre-dimensioning fire
[KLH REI 120](#)

Fire resistance
R*EI
120

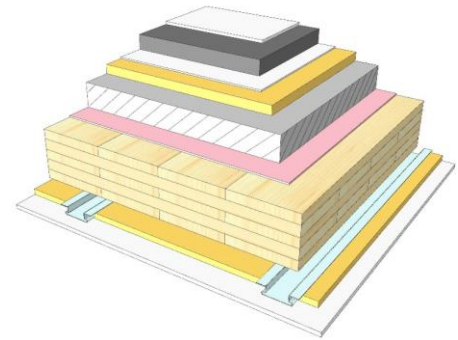
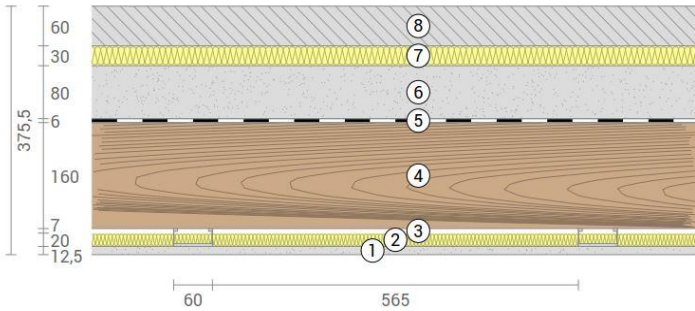
Thermal protection
W/(m²K)
0,39

Sound insulation
dB
60

Ecology
kg CO₂eq./m²
-81

GD 03 RP

Compartment floor / Cement screed, heavy fill
(elast. bonded or acoustic sheet) / SC on resilient profiles



No	mm	Material
1	12,5	Gt-F board
2	20	Mineral wool
3	27	Resilient profile
4	160	KLH® - CLT
5	6	Acoustic sheed (or elast. bonded fill)
6	80	Heavy fill (bonded)
7	30	Impact sound insulation, $s' \leq 10 \text{ MN/m}^3$
8	60	Wet screed

R*EI (fire attack from below)	120 minutes
-------------------------------	--------------------

U-Value	0,32 W/(m ² K)
---------	----------------------------------

Rw	62 (-1;-3) dB
----	----------------------

Lnw	41 (1) dB
-----	------------------

Thickness	376 mm
-----------	---------------

Mass per squaremeter	346 kg/m ²
----------------------	------------------------------

Global warming potential	-78 kg CO ₂ eq./m ²
--------------------------	--

Primary energy (n. renewable)	123 kWh/m ²
-------------------------------	-------------------------------

Link Ubakus
[GD 03 RP Ubakus](#)

Link pre-dimensioning fire
[KLH REI 120](#)

Fire resistance
R*EI
120

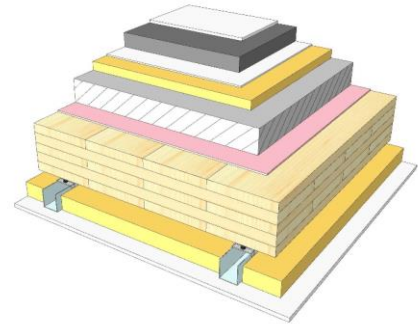
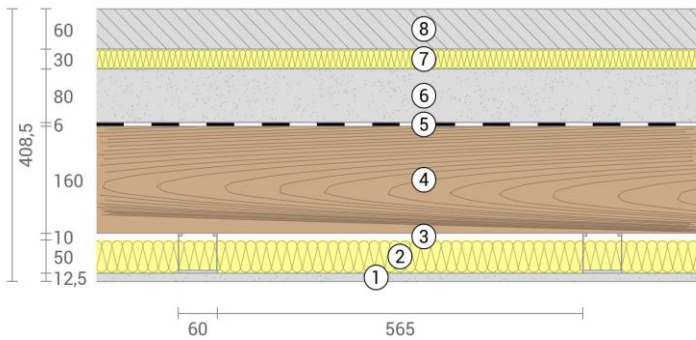
Thermal protection
W/(m²K)
0,32

Sound insulation
dB
62

Ecology
kg CO₂eq./m²
-78

GD 03 SC

Compartment floor / Cement screed, heavy fill
(elast. bonded or acoustic sheet) / SC on CD-profiles



No	mm	Material
1	12,5	Gt-F board
2	50	Mineral wool
3	60	CD-profile
4	160	KLH® - CLT
5	6	Acoustic sheed (or elast. bonded fill)
6	80	Heavy fill (bonded)
7	30	Impact sound insulation, $s' \leq 10 \text{ MN/m}^3$
8	60	Wet screed

R*EI (fire attack from below)	120 minutes
-------------------------------	--------------------

U-Value	0,28 W/(m²K)
---------	---------------------

Rw	68 (-2;-5) dB
----	----------------------

Lnw	39 (0) dB
-----	------------------

Thickness	409 mm
-----------	---------------

Mass per squaremeter	347 kg/m²
----------------------	------------------

Global warming potential	-75 kg CO ₂ eq./m²
--------------------------	--------------------------------------

Primary energy (n. renewable)	131 kWh/m²
-------------------------------	-------------------

Link Ubakus
[GD 03 SC Ubakus](#)

Link pre-dimensioning fire
[KLH REI 120](#)

Fire resistance
R*EI
120

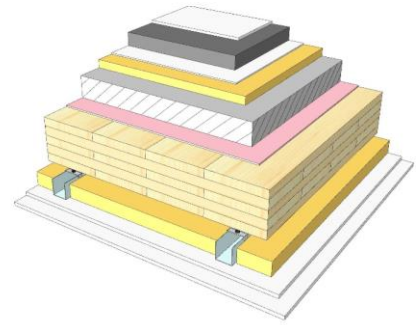
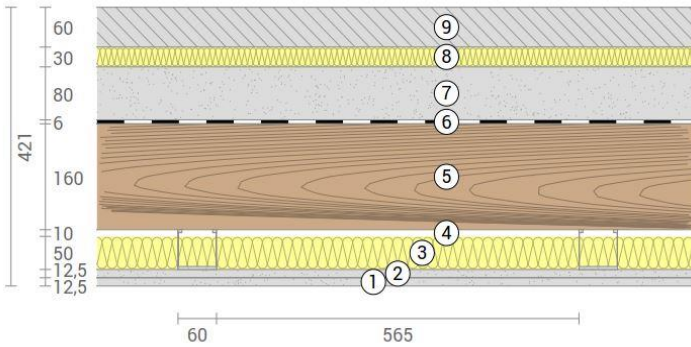
Thermal protection
W/(m²K)
0,28

Sound insulation
dB
68

Ecology
kg CO₂eq./m²
-75

GD 03 SC2

Compartment floor / Cement screed, heavy fill
(elast. bonded or acoustic sheet) / SC on CD-profiles, resilient clips



No	mm	Material
1	12,5	Gt-F board
2	12,5	Gt-F board
3	50	Mineral wool
4	60	CD-profile on resilient clips
5	160	KLH® - CLT
6	6	Acoustic sheed (or elast. bonded fill)
7	80	Heavy fill (bonded)
8	30	Impact sound insulation, $s' \leq 10 \text{ MN/m}^3$
9	60	Wet screed

R*EI (fire attack from below)
120 minutes

U-Value
0,28 W/(m ² K)

Rw
74 (-1;-1) dB

Lnw
37 (3) dB

Thickness
421 mm
Mass per squaremeter
357 kg/m ²

Global warming potential
-73 kg CO ₂ eq./m ²
Primary energy (n. renewable)
141 kWh/m ²

Link Ubakus
[GD 03 SC2 Ubakus](#)

Link pre-dimensioning fire
[KLH REI 120](#)

Fire resistance
R*EI
120

Thermal protection
W/(m²K)
0,28

Sound insulation
dB
74

Ecology
kg CO₂eq./m²
-73