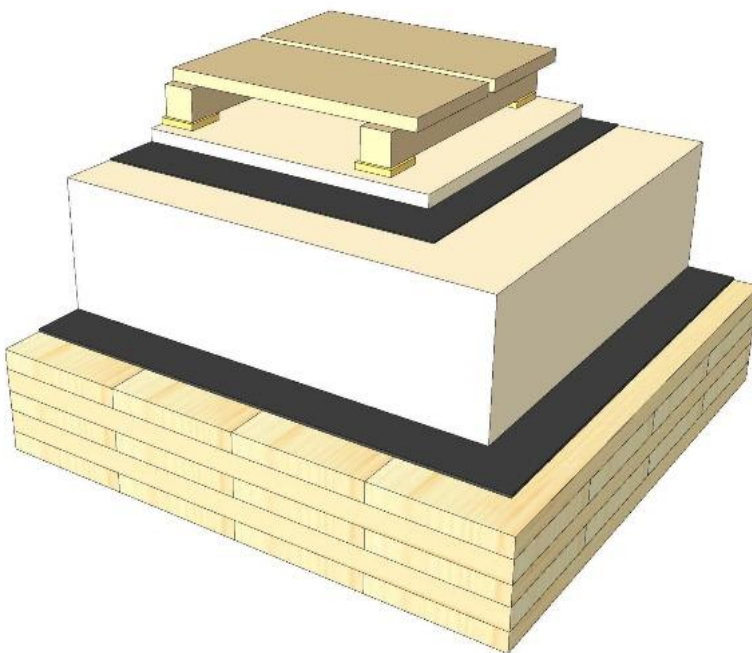
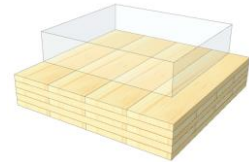


DA 07

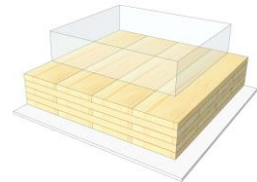
Flat roof / wood terrace



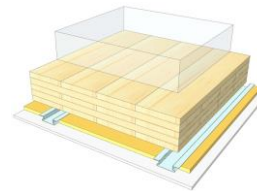
KLH® Visible



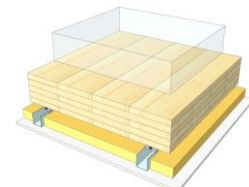
+ G



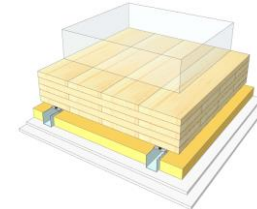
+ RP



+ SC



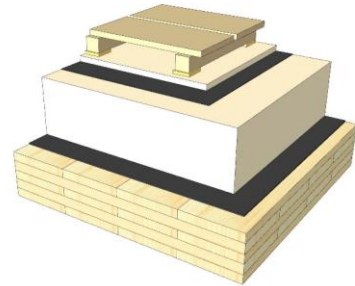
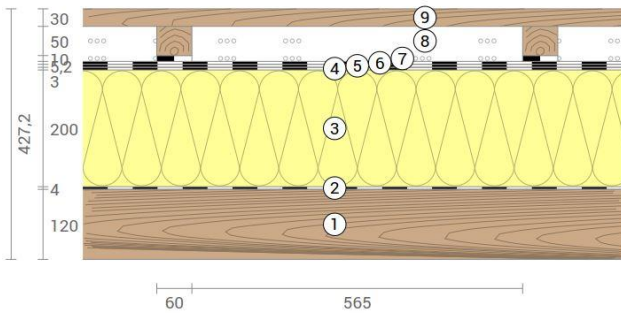
+ SC / 2*G



	KLH® Visible	+ G	+ RP	+ SC	+ SC / 2*G
Airborne Rw [dB]	38	39	46	51	58
Impact Ln,w [dB]	62	62	57	52	46
Thermal U [W/m²K]	0,14	0,14	0,13	0,12	0,12
Fire R*EI [min]	60	90	90	90	90
Thickness [mm]	427	440	467	500	512
Ecology [kg CO2 eq./m²]	-78	-75	-72	-69	-67

DA 07 V

Roof terrace / EPS / wood decking



No	mm	Material
1	120	KLH® - CLT
2	4	Vapour barrier
3	200	Roof panel, EPS
4	3	Roof sealing sheet, 1st layer
5	5	Roof sealing sheet, 2nd layer
6	5	Separating layer
7	10	Elastic bearing
8	50	Timber substructure
9	30	Wood decking

R*EI (fire attack from below)
60 minutes

U-Value
0,14 W/(m²K)

Rw
38 (-1;-5) dB

Lnw
62 (-1) dB

Thickness
427 mm

Mass per squaremeter
97 kg/m²

Global warming potential
-78 kg CO ₂ eq./m²

Primary energy (n. renewable)
336 kWh/m²

Link Ubakus
DA 07 V Ubakus

Link pre-dimensioning fire
KLH REI 60

Fire resistance
R*EI
60

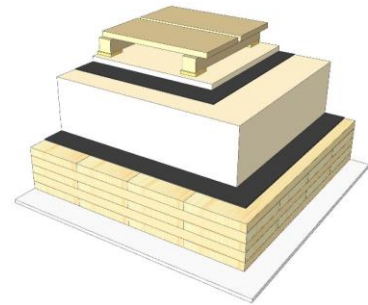
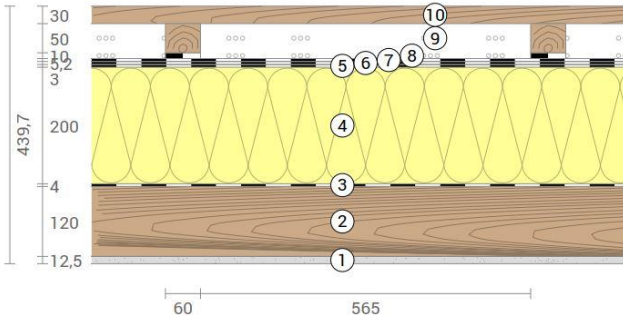
Thermal protection
W/(m²K)
0,14

Sound insulation
dB
38

Ecology
kg CO₂eq./m²
-78

DA 07 G

Roof terrace / EPS / wood decking
Cladded



No	mm	Material
1	12,5	Gt-F board
2	120	KLH® - CLT
3	4	Vapour barrier
4	200	Roof panel, EPS
5	3	Roof sealing sheet, 1st layer
6	5	Roof sealing sheet, 2nd layer
7	5	Separating layer
8	10	Elastic bearing
9	50	Timber substructure
10	30	Wood decking

R*EI (fire attack from below)
60 minutes

U-Value
0,14 W/(m²K)

Rw
39 (-1;-5) dB

Lnw
62 (-1) dB

Thickness
440 mm

Mass per squaremeter
107 kg/m²

Global warming potential
-75 kg CO ₂ eq./m²

Primary energy (n. renewable)
346 kWh/m²

Link Ubakus
[DA 07 G Ubakus](#)

Link pre-dimensioning fire
[KLH REI 60](#)

Fire resistance
R*EI
60

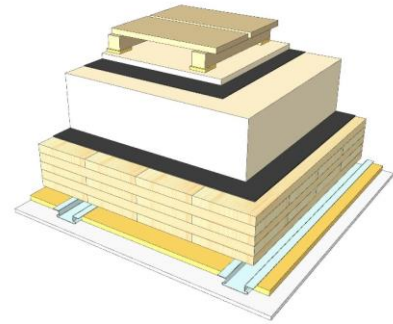
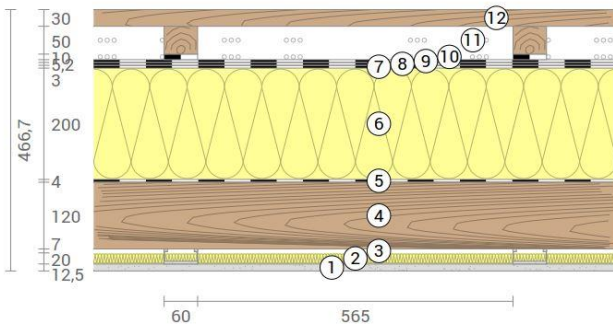
Thermal protection
W/(m²K)
0,14

Sound insulation
dB
39

Ecology
kg CO₂eq./m²
-75

DA 07 RP

Roof terrace / EPS / wood decking
SC on resilient profiles



No	mm	Material
1	12,5	Gt-F board
2	20	Mineral wool
3	27	Resilient profile
4	120	KLH® - CLT
5	4	Vapour barrier
6	200	Roof panel, EPS
7	3	Roof sealing sheet, 1st layer
8	5	Roof sealing sheet, 2nd layer
9	5	Separating layer
10	10	Elastic bearing
11	50	Timber substructure
12	30	Wood decking

R*EI (fire attack from below)
60 minutes

U-Value
0,13 W/(m²K)

Rw
46 (-1;-7) dB

Lnw
57 (0) dB

Thickness
467 mm
Mass per squaremeter
108 kg/m²

Global warming potential
-72 kg CO ₂ eq./m²
Primary energy (n. renewable)
358 kWh/m²

Link Ubakus
[DA 07 RP Ubakus](#)

Link pre-dimensioning fire
[KLH REI 60](#)

Fire resistance
R*EI
60

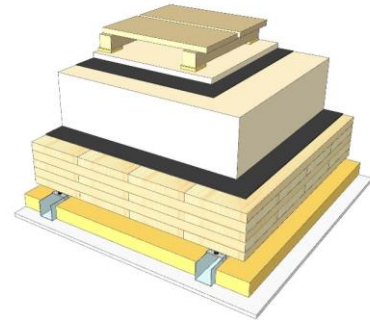
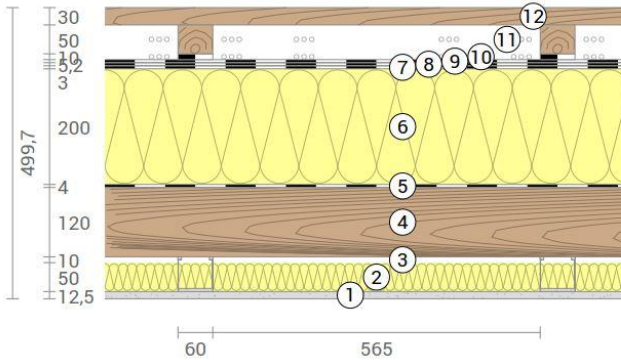
Thermal protection
W/(m²K)
0,13

Sound insulation
dB
46

Ecology
kg CO₂eq./m²
-72

DA 07 SC

Roof terrace / EPS / wood decking
SC on CD-profiles



No	mm	Material
1	15	Gt-F board
2	50	Rock wool
3	60	CD-profiles
4	120	KLH® - CLT
5	4	Vapour barrier
6	200	Roof panel, EPS
7	3	Roof sealing sheet, 1st layer
8	5	Roof sealing sheet, 2nd layer
9	5	Separating layer
10	10	Elastic bearing
11	50	Timber substructure
12	30	Wood decking

R*EI (fire attack from below)	60 minutes
-------------------------------	-------------------

U-Value	0,12 W/(m²K)
---------	---------------------

Rw	51 (0;6) dB
----	--------------------

Lnw	52 (1) dB
-----	------------------

Thickness	500 mm
-----------	---------------

Mass per squaremeter	109 kg/m²
----------------------	------------------

Global warming potential	-69 kg CO ₂ eq./m²
--------------------------	--------------------------------------

Primary energy (n. renewable)	366 kWh/m²
-------------------------------	-------------------

Link Ubakus
[DA 07 SC Ubakus](#)

Link pre-dimensioning fire
[KLH REI 60](#)

Fire resistance
R*EI
60

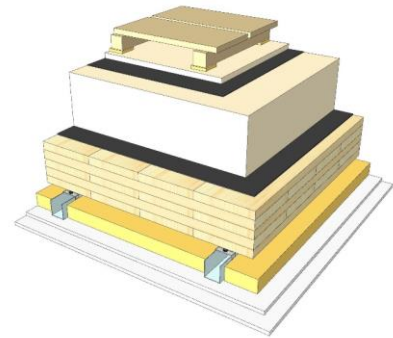
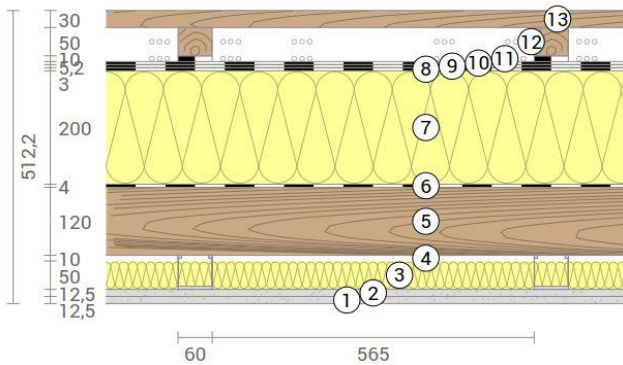
Thermal protection
W/(m²K)
0,12

Sound insulation
dB
51

Ecology
kg CO₂eq./m²
-69

DA 07 SC2

Roof terrace / EPS / wood decking
 SC on CD-profiles, resilient clips



No	mm	Material
1	12,5	Gt-F board
2	12,5	Gt-F board
3	50	Rock wool
4	60	CD-profiles on resilient clips
5	120	KLH® - CLT
6	4	Vapour barrier
7	200	Roof panel, EPS
8	3	Roof sealing sheet, 1st layer
9	5	Roof sealing sheet, 2nd layer
10	5	Separating layer
11	10	Elastic bearing
12	50	Timber substructure
13	30	Wood decking

R*EI (fire attack from below)	90 minutes
-------------------------------	-------------------

U-Value	0,12 W/(m²K)
---------	---------------------

Rw	58 (-4;-9) dB
----	----------------------

Lnw	46 (2) dB
-----	------------------

Thickness	512 mm
Mass per squaremeter	119 kg/m²

Global warming potential	-67 kg CO ₂ eq./m²
Primary energy (n. renewable)	376 kWh/m²

Link Ubakus
[DA 07 SC2 Ubakus](#)

Link pre-dimensioning fire
[KLH REI 90](#)


Fire resistance
 R*EI
90



Thermal protection
 W/(m²K)
0,12



Sound insulation
 dB
58



Ecology
 kg CO₂eq./m²
-67

