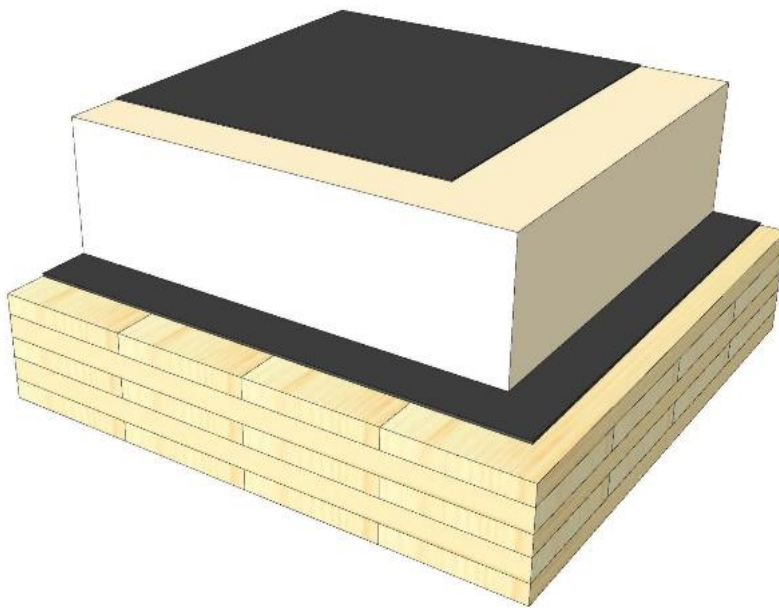
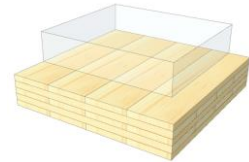


DA 04

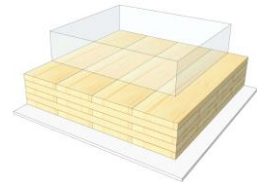
Flat roof / EPS



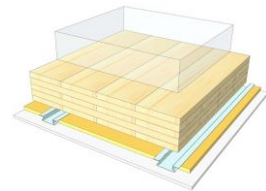
KLH® Visible



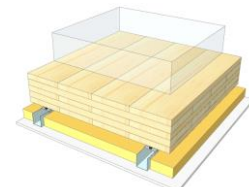
+ G



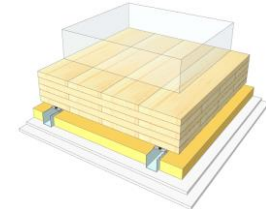
+ RP



+ SC



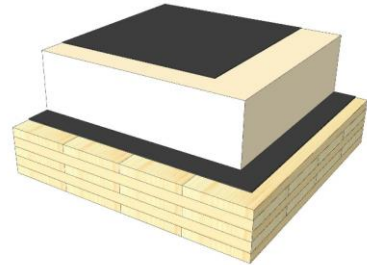
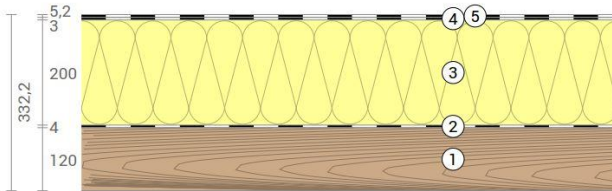
+ SC / 2*G



	KLH® Visible	+ G	+ RP	+ SC	+ SC / 2*G
Airborne Rw [dB]	36	37	45	51	56
Impact Ln,w [dB]					
Thermal U [W/m²K]	0,14	0,14	0,13	0,13	0,12
Fire R*EI [min]	60	60	60	60	90
Thickness [mm]	332	345	372	405	417
Ecology [kg CO2 eq./m²]	-53	-51	-47	-45	-43

DA 04 V

Flat roof / EPS



No	mm	Material
1	120	KLH® - CLT
2	4	Vapour barrier
3	200	Roof panel, EPS
4	3	Roof sealing sheet, 1st layer
5	5	Roof sealing sheet, 2nd layer

R*EI (fire attack from below)
60 minutes

U-Value
0,14 W/(m²K)

Rw
36 (1;-3) dB

Thickness
332 mm
Mass per squaremeter
75 kg/m²

Global warming potential
-53 kg CO ₂ eq./m²
Primary energy (n. renewable)
329 kWh/m²

Link Ubakus
[DA 04 V Ubakus](#)

Link pre-dimensioning fire
[KLH REI 60](#)

Fire resistance
R*EI
60

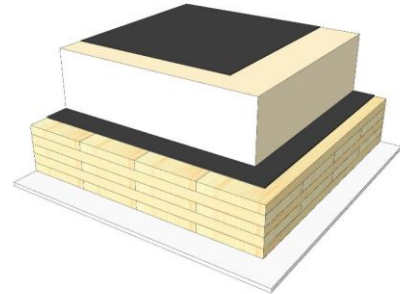
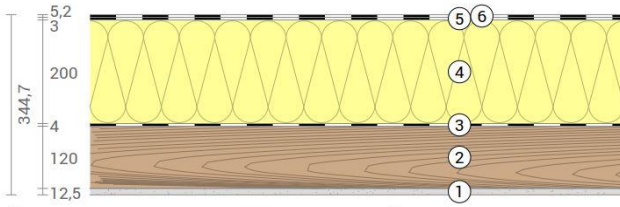
Thermal protection
W/(m²K)
0,14

Sound insulation
dB
36

Ecology
kg CO₂eq./m²
-53

DA 04 G

Flat roof / EPS
Cladded



No	mm	Material
1	12,5	Gt-F board
2	120	KLH® - CLT
3	4	Vapour barrier
4	200	Roof panel, EPS
5	3	Roof sealing sheet, 1st layer
6	5	Roof sealing sheet, 2nd layer

R*EI (fire attack from below)	60 minutes
-------------------------------	-------------------

U-Value	0,14 W/(m²K)
---------	---------------------

Rw	37 (1;-3) dB
----	---------------------

Thickness	345 mm
Mass per squaremeter	85 kg/m²

Global warming potential	-51 kg CO ₂ eq./m²
Primary energy (n. renewable)	340 kWh/m²

Link Ubakus
[DA 04 G Ubakus](#)

Link pre-dimensioning fire
[KLH REI 60](#)

Fire resistance
R*EI
60

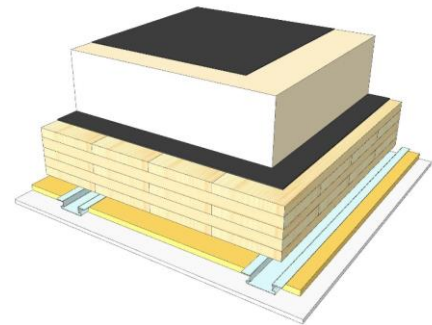
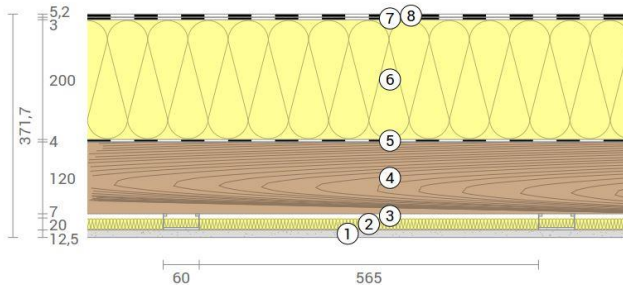
Thermal protection
W/(m²K)
0,14

Sound insulation
dB
37

Ecology
kg CO₂eq./m²
-51

DA 04 RP

Flat roof / EPS
SC on resilient profiles



No	mm	Material
1	12,5	Gt-F board
2	20	Mineral wool
3	27	Resilient profile
4	120	KLH® - CLT
5	4	Vapour barrier
6	200	Roof panel, EPS
7	3	Roof sealing sheet, 1st layer
8	5	Roof sealing sheet, 2nd layer

R*EI (fire attack from below)
60 minutes

U-Value
0,13 W/(m²K)

Rw
45 (0;6) dB

Thickness
372 mm
Mass per squaremeter
86 kg/m²

Global warming potential
-47 kg CO ₂ eq./m²
Primary energy (n. renewable)
351 kWh/m²

Link Ubakus
[DA 04 RP Ubakus](#)

Link pre-dimensioning fire
[KLH REI 60](#)

Fire resistance
R*EI
60

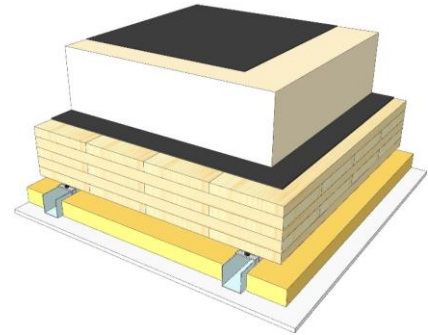
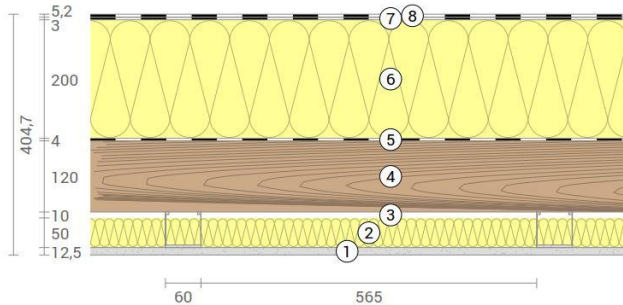
Thermal protection
W/(m²K)
0,13

Sound insulation
dB
45

Ecology
kg CO₂eq./m²
-47

DA 04 SC

Flat roof / EPS
SC on CD-profiles



No	mm	Material
1	15	Gt-F board
2	50	Rock wool
3	60	CD-profiles
4	120	KLH® - CLT
5	4	Vapour barrier
6	200	Roof panel, EPS
7	3	Roof sealing sheet, 1st layer
8	5	Roof sealing sheet, 2nd layer

R*EI (fire attack from below)
60 minutes

U-Value
0,13 W/(m²K)

Rw
51 (0;6) dB

Thickness
405 mm
Mass per squaremeter
87 kg/m²

Global warming potential
-45 kg CO ₂ eq./m²
Primary energy (n. renewable)
359 kWh/m²

Link Ubakus
[DA 04 SC Ubakus](#)

Link pre-dimensioning fire
[KLH REI 60](#)

Fire resistance
R*EI
60

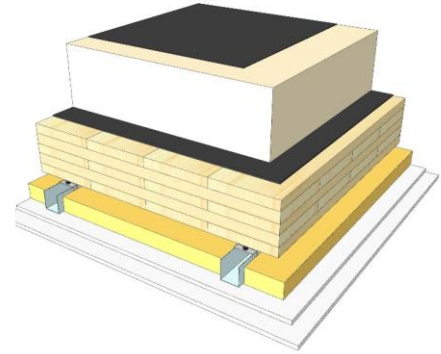
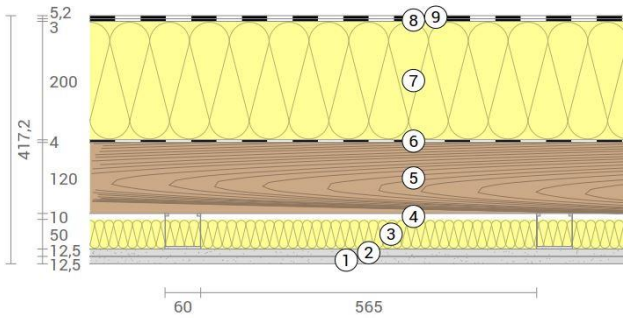
Thermal protection
W/(m²K)
0,13

Sound insulation
dB
51

Ecology
kg CO₂eq./m²
-45

DA 04 SC2

Flat roof / EPS
 SC on CD-profiles, resilient clips



No	mm	Material
1	12,5	Gt-F board
2	12,5	Gt-F board
3	50	Rock wool
4	60	CD-profiles on resilient clips
5	120	KLH® - CLT
6	4	Vapour barrier
7	200	Roof panel, EPS
8	3	Roof sealing sheet, 1st layer
9	5	Roof sealing sheet, 2nd layer

R*EI (fire attack from below)	90 minutes
-------------------------------	-------------------

U-Value	0,12 W/(m²K)
---------	---------------------

Rw	56 (-2;-7) dB
----	----------------------

Thickness	417 mm
Mass per squaremeter	97 kg/m²

Global warming potential	-43 kg CO ₂ eq./m²
Primary energy (n. renewable)	370 kWh/m²

Link Ubakus
[DA 04 SC2 Ubakus](#)

Link pre-dimensioning fire
[KLH REI 90](#)

Fire resistance
 R*EI
90

Thermal protection
 W/(m²K)
0,12

Sound insulation
 dB
56

Ecology
 kg CO₂eq./m²
-43