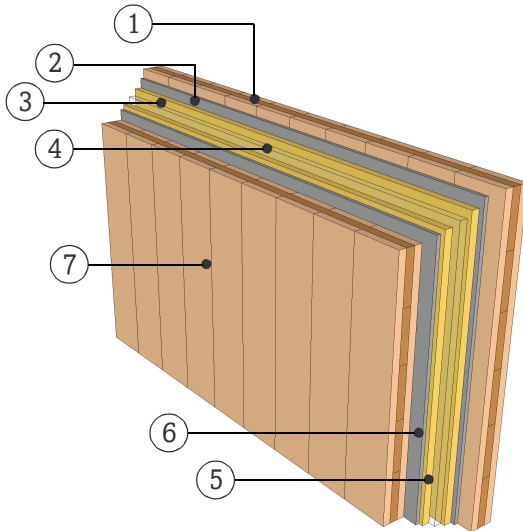


DATASHEET

PARTITION WALL

WTW16.02

TWO SEPARATE LAYER



FIRE RESISTANCE

Pre-dimensioning for fire attack on both sides

R*EI 30 > 3s 80 TT

R*EI 60 > 5s 100 TT

R*EI 90 > 5s 120 TT

*For residual load capacity or alternative design see <https://www.klhdesigner.at/>

SOUND INSULATION

R_w (C;C_{tr}) 66 (-4;-8) [dB]

<https://www.klh.at/en/online-component-catalogue/>

THERMAL PROTECTION

U 0,27 [W/m²K]

m_{w,B,A} 36/36 [kg/m²]

MATERIAL

PROPERTIES

	[mm]		λ [W/mK]	μ min-max [-]	ρ [kg/m³]	c [kJ/kgK]	
①	100.0	TT, KLH solid timber slab	0.12	50 - 300	470	1.6	D
②	15.0	Cement bonded sandwich panel, Fermacell	0.4	40	1000	1	A1
③	30.0	Glasfiber with felt layer	0.032	1	40	0.81	A2
④	30.0	Air gap					
⑤	30.0	Glasfiber with felt layer	0.032	1	40	0.81	A2
⑥	15.0	Cement bonded sandwich panel, Fermacell	0.4	40	1000	1	A1
⑦	100.0	TT, KLH solid timber slab	0.12	50 - 300	470	1.6	D

Thickness 320,0 [mm]

Mass per squaremeter ca. 135 [kg/m²]

Test report sound: HFA 781a2016-BB
Calculation of the physical values by the
KLH Massivholz GmbH, without warranty