



PROJECT

THE NEW HOUSE

LOCATION

Bobingen,
Germany

QUALITY AND GRACE

.....

The modern extraordinary residence was designed to offer generous and variable usable floor plans, while maintaining an appealing design and taking into account the aspect of sustainability and resource conservation. The goal was to reduce the future energy consumption and CO2 footprint as low as possible. In the design, the original cubature and exterior lines were largely but still achieved improvements in quality and grace. An open and use-variable common living area forms the center of the house.

The newly building elements were essentially made of KLH® – CLT, which is not only sustainable, but also aesthetically pleasing. Forward-looking construction methods and building services make the house a low-energy building with an annual saving of approx. 10 tonnes of CO2.

The house proves that sustainability and aesthetic design can go hand in hand, and that it is possible to build a modern house that is nevertheless respectful of nature.

PROJEKT INFO

VOLUME OF KLH® – CLT
75m³ / 740m²

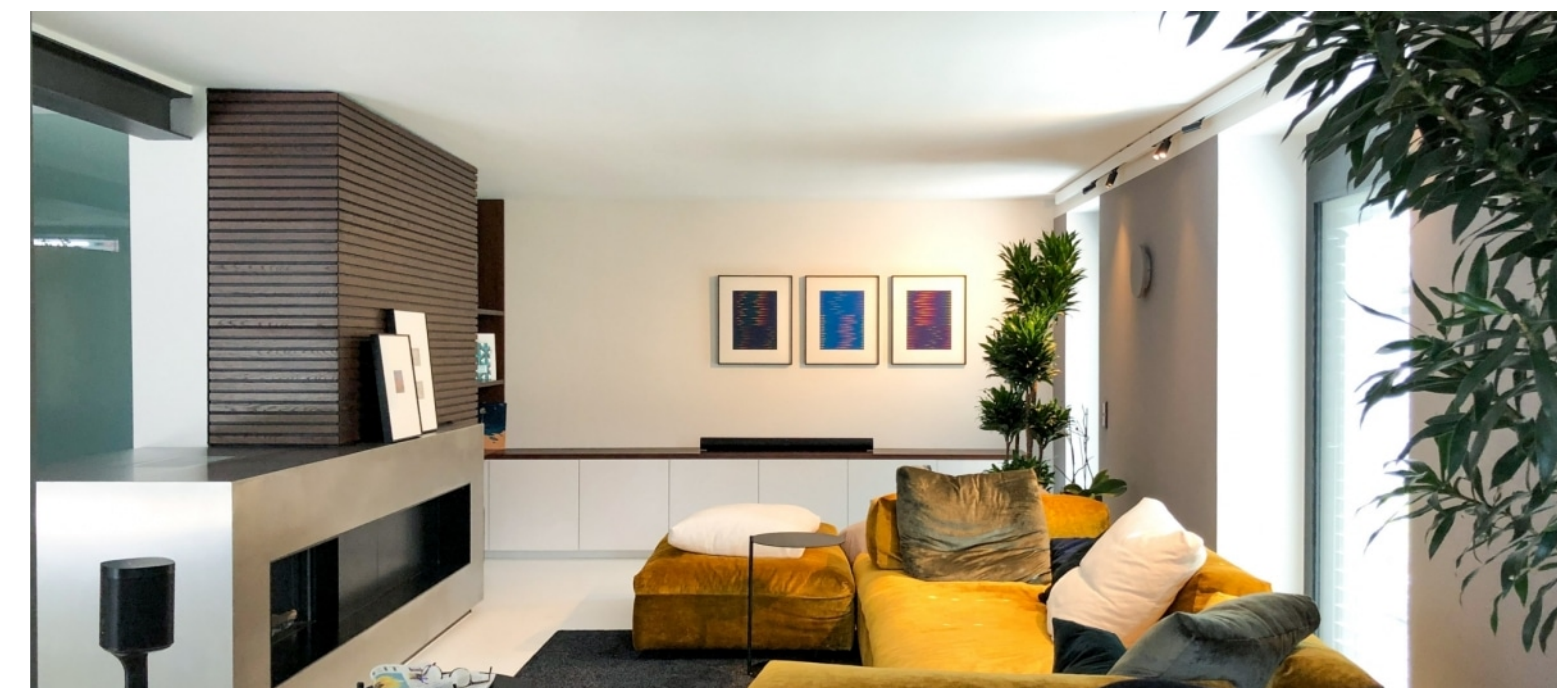
STORED CARBON
60 tonnes (Regrowth time in Austria – 1 minute)

AWARD

Exemplary designed buildings in the district of Augsburg
www.landkreis-augsburg.de

REFURBISHMENT & EXTENSIONS







.....
ARCHITECT

Architekturbüro Rainer
Drasch
www.the-architect.biz

.....
CLIENT

Angelika Hübner & Paul
Kammerer

.....
STRUCTURAL DESIGN

Schüller – Gailhofer – Bauer
Ingenieurgesellschaft
für Tragwerksplanung mbH
www.sgb-statik.de

.....
TIMBER CONSTRUCTION

Killisperger Otto Holzbau
www.holzbau-killisperger.de

.....
PHOTOGRAPHER

© Paul Kammerer