

 KLH®

PROJECT

BRONX CHILDREN'S MUSEUM

LOCATION

Bronx,
USA

ROOM FOR IMAGINATION WITH CURVED KLH® – CLT

.....

The children's museum in the Bronx blends nature and urban culture in a historic 1925 power plant by the Harlem River. Its organic design, inspired by Jean Piaget's ideas on children's spatial perception, offers a unique space for imagination. The museum, the first of its kind in the Bronx, features interactive exhibits focusing on art, music, role-playing, and scientific exploration. Built with LEED Gold certification in mind, it extensively uses natural and recycled materials, including innovative curved KLH® – CLT. Large interlocking panels for walls

and railings were precisely formed and CNC-milled to enable quick on-site assembly. Diverse-height curved benches, inviting all age groups to rest, were factory-coated. The museum stands as a beacon of sustainability and innovation.

PROJECT INFO

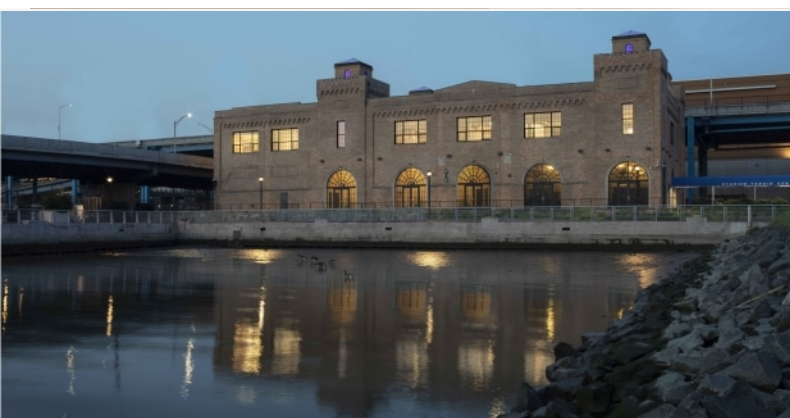
Volume of KLH® – CLT: 2575 m² / 402 m³

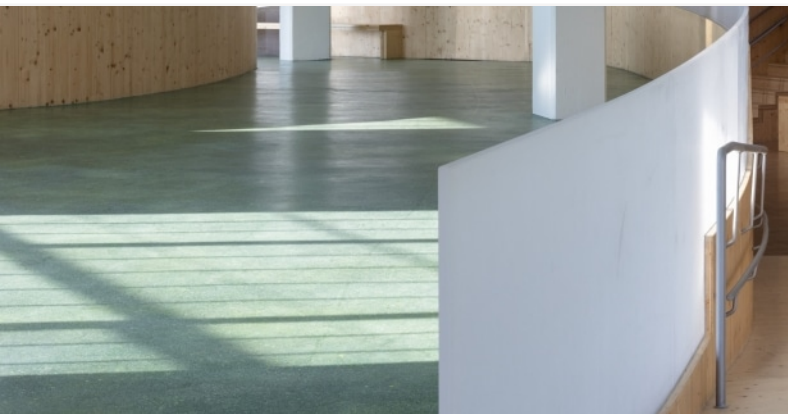
Stored Carbon: 306 Tonnen

Regrowth time in Austria : 7 minutes

PUBLIC BUILDINGS







.....
ARCHITECT

O'Neill Mc Voy Architects
www.oneillmcvoy.com

.....
GENERAL CONTRACTOR

A Quest Corporation

.....
CLIENT

New York City Department of Design
and Construction

.....
PHOTOGRAPHY CREDITS

© Paul Warchol

.....
STRUCTURAL ENGINEER

Silman A TYlin Company
www.silman.com